



GIG
CYMRU
NHS
WALES

Cydweithrediad
Iechyd GIG Cymru
NHS Wales Health
Collaborative

Laboratory Information Network Cymru (LINC)

LINC Overview

July 2021

Laboratory Information Network Cymru



Designing the future of pathology through innovation



GIG
CYMRU
NHS
WALES

Cydweithrediad
Iechyd GIG Cymru
NHS Wales Health
Collaborative

LINC Aim

The *aim* of the LINC Programme is to enable the development of modern, safe, sustainable pathology services through end-to-end information systems & services.

It underpins the delivery of the Welsh Government [Pathology Statement of Intent](#).

A key component is to further standardise pathology services across Wales through the procurement and implementation of a standardised laboratory information management system (LIMS) service.

LINC Strategic Objectives

1. Learn the lessons from WLIMS1
2. Deliver benefits that improve patient care, safety & outcomes
3. Engage the Pathology and wider NHS to ensure commitment
4. Procure new LIMS Service to replace three current LIMS
5. Ensure long term ownership and management of the service
6. Deliver a seamless end-to-end electronic Pathology solution
7. Standardise Pathology services, with warranted variation
8. Establish a national quality management service and system
9. Develop information and business intelligence services
10. Develop a different approach to integration services



GIG
CYMRU
NHS
WALES

Cydweithrediad
Iechyd GIG Cymru
NHS Wales Health
Collaborative

Pathology

Andrology
Blood sciences / Blood transfusion
Cellular pathology / mortuary
Microbiology
Welsh Blood Service
Screening services
POCT

34+ million test requests pa
Routine and international work
21 laboratories
>2,000 staff
2%-5% demand increase pa
Shortage of consultants

Requesters from:
NHS primary & secondary care
Prisons, private hospitals, hospices
Veterinary practices
Environmental health
Natural Resources Wales

Advances in:
Covid testing
Genetics testing
Artificial intelligence

Current Position

- Three LIMS in place
 - InterSystems TrakCare Lab 2016 (upgraded December 2020)
 - Individual health board configuration
 - Dedalus Telepath (>40 years old)
 - Blood Transfusion for 4 health boards
 - Cellular Pathology in Cardiff and Vale UHB
 - Clinisys Masterlab (>25 years old)
 - Blood Transfusion for 2 health boards
- InterSystems contract ends June 2025
 - Cannot be renewed
 - no legal contractual basis
 - product end of life

LIMS Service

- Supplier hosted LIMS application providing core and discipline specific functionality for defined pathology services to the required standards.
- Additional tools, including:
 - Document scanning
 - Digital dictation, speech recognition and voice command
 - Vein-to-vein blood tracking with remote issue
 - Integration to the national pathology exchange (NPEx)
- Business intelligence and reporting solution.
- An optional tool for electronic test requesting.
- 99.99% availability



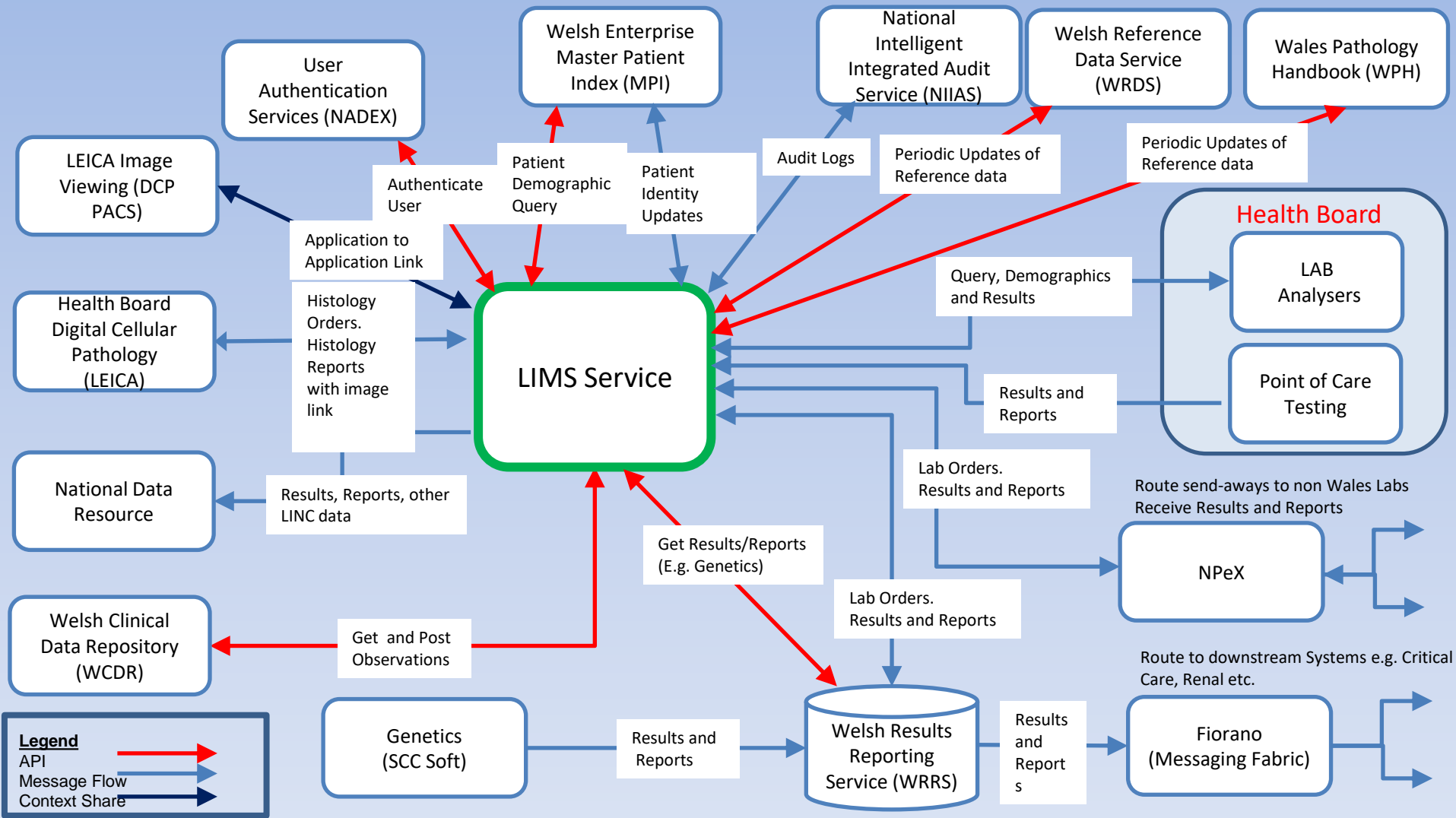
GIG
CYMRU
NHS
WALES

Cydweithrediad
Iechyd GIG Cymru
NHS Wales Health
Collaborative

Procurement Strategy

- Master Services Agreement
 - DHCW Contracting Authority
- Local Deployment Orders
- Competitive Dialogue procurement
 - January 2020 – April 2021
- Contract 7 years plus 1 plus 1
- Single, prime contractor solution
- Contract value £22m
- 4 years exit support

LINC Integration Summary

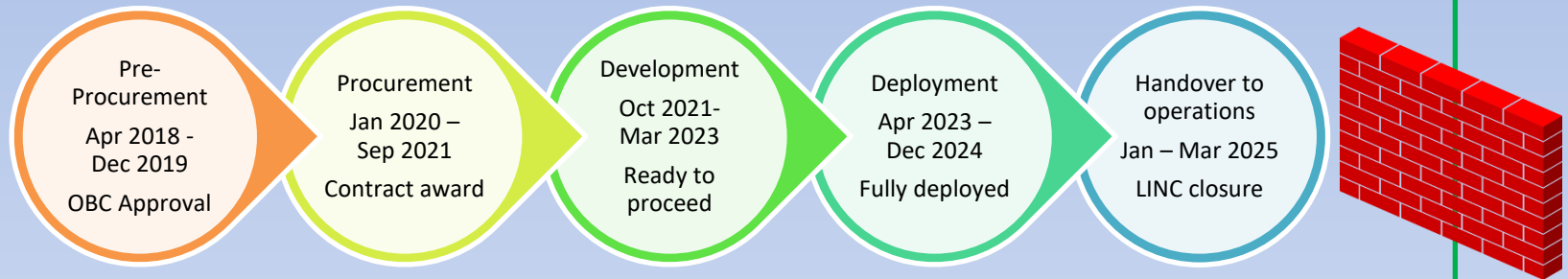


LINC Timeframe

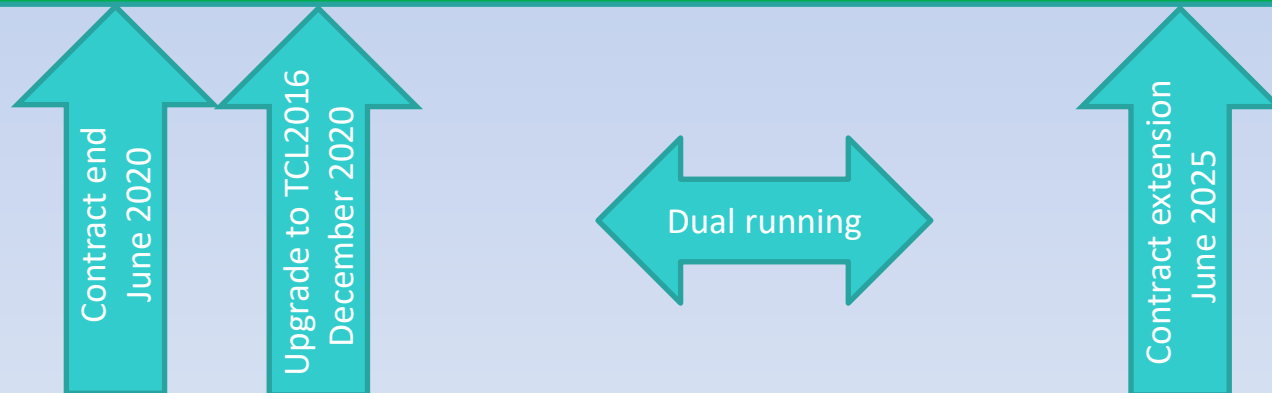
Tranche 0	Tranche 1	Tranche 2	Tranche 3	Tranche 4
Pre-procurement	Procurement	Development	Deployment	Close
Apr18-Dec19	Jan20-Sep21	Oct21-Mar23	Apr23-Dec24	Jan25-Mar25
<p>Outline business case</p> <p>Contract documentation</p> <p>Standardisation approach</p> <p>Quality management</p>	<p>Procurement Benefits specification</p> <p>Standardisation design</p> <p>Business change</p> <p>Full business case</p>	<p>Hosting LIMS Service</p> <ul style="list-style-type: none"> - development - Testing - UAT - Validation <p>Once for Wales</p> <p>Preparation for deployment</p>	<ol style="list-style-type: none"> 1. CAV & PHW Screening (6 mths) 2. CTM (3 mths) 3. BCU (3 mths) 4. SBU (3 mths) 5. ABU (3 mths) 6. HDU (3 mths) 	<p>Handover to operations</p> <p>Programme closure</p>

LINC Critical Path

LINC Programme



WLIMS 1



GIG
CYMRU
NHS
WALES

Cydweithrediad
Iechyd GIG Cymru
NHS Wales Health
Collaborative

Development

Oct 2021–
Mar 2023

Ready to
proceed

LIMS Service Development

Review future
state
Benefits plan
Assets
defined
Prepare for
deployment

Infrastructure
testing
Integration
testing
LIMS
familiarisation
Role based
access testing

User
acceptance
testing
Detailed
deployment
planning

**All Wales
Local
Deployment
Projects**

Phase 1
Oct 21 –
Mar 22

- Infrastructure installed
- Design agreed

Phase 2
Apr –
Sep 22

- Configuration
- Operational acceptance testing
- Requirements testing

Phase 3
Oct 22 –
Mar 23

- User acceptance testing
- Clinical safety evaluation

Validation
GAMP 5

Installation qualification

Operational qualification

Performance qualification

Cutover qualification

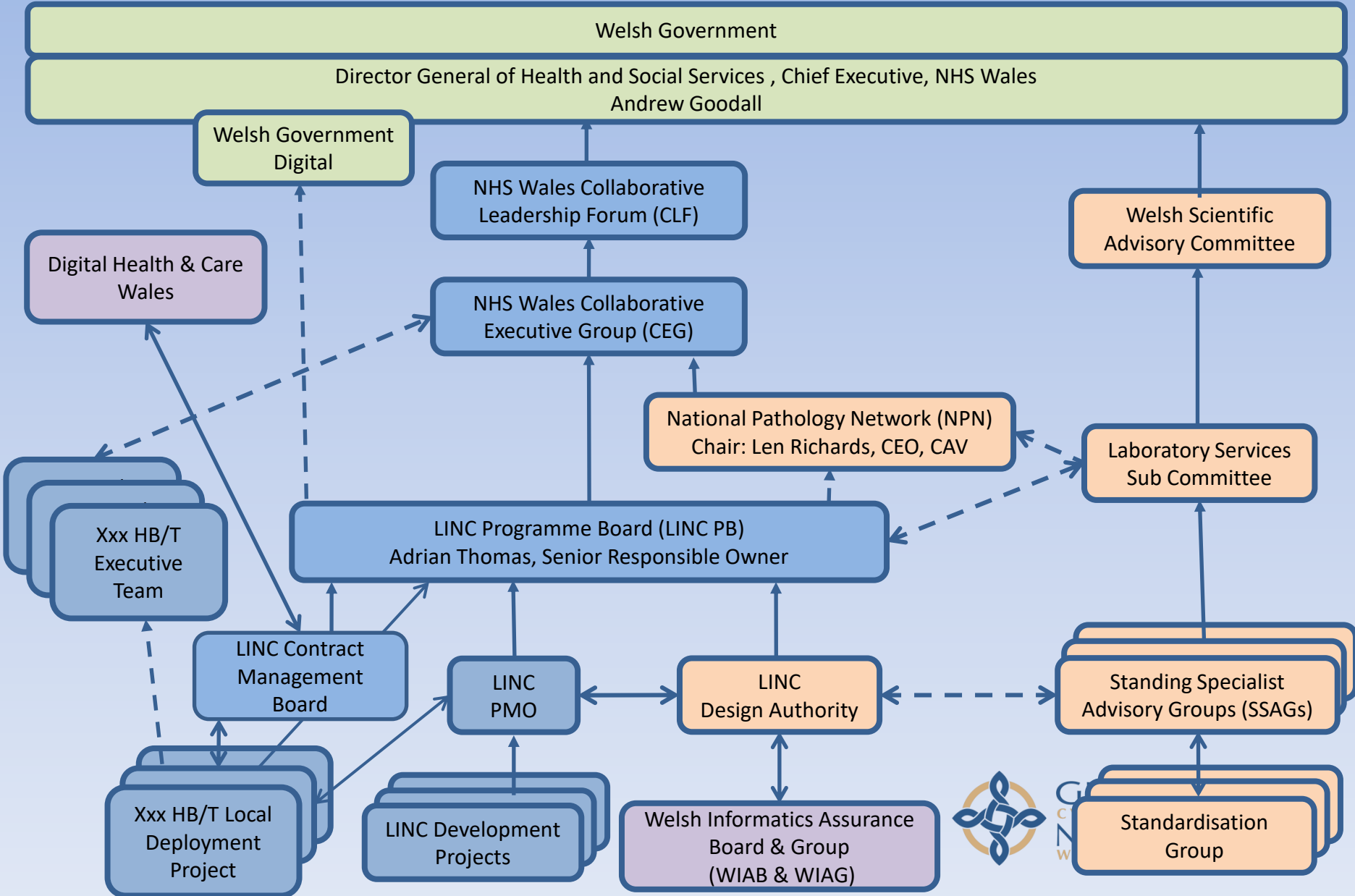


GIG
CYMRU
CYMRU
NHS
WALES

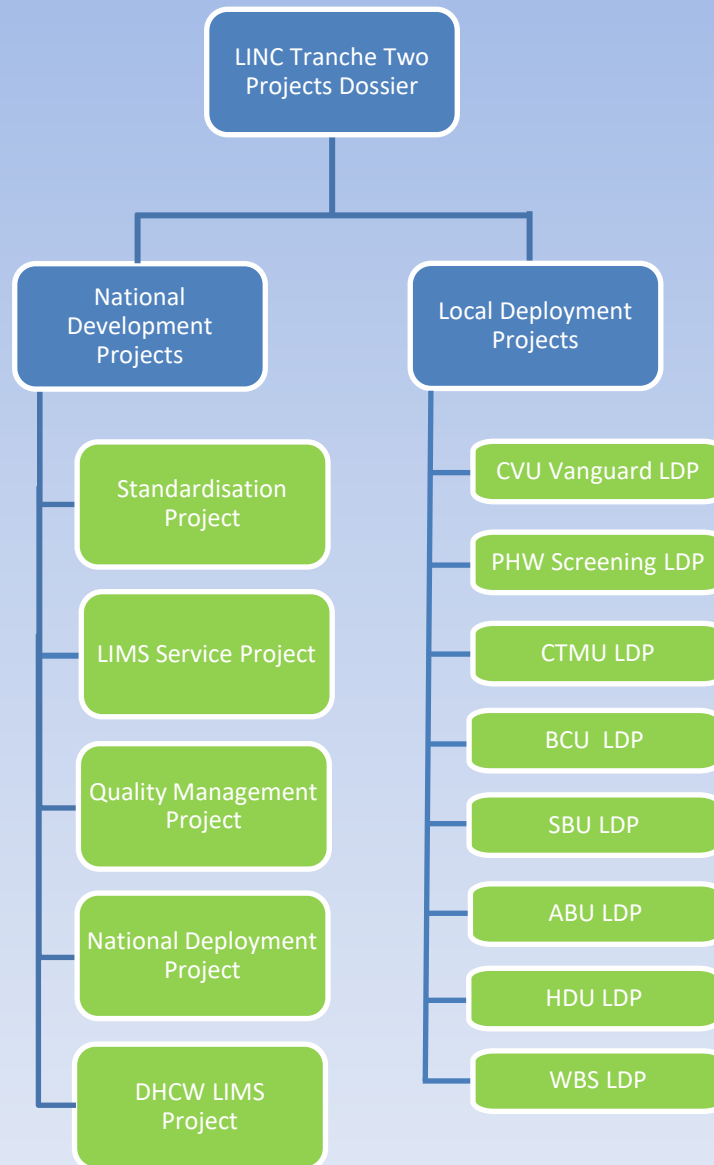
Cydweithred
lechydd
NHS W
Collab

and
mr
alt

LINC Tranche Two Programme Governance



LINC Projects Dossier Tranche 2



GIG
CYMRU
NHS
WALES

Cydweithrediad
Iechyd GIG Cymru
NHS Wales Health
Collaborative

