



Issue Date: March 27th 2018

# WALES CAMHS/ED NETWORK ANNUAL AUDIT EVENT 2018



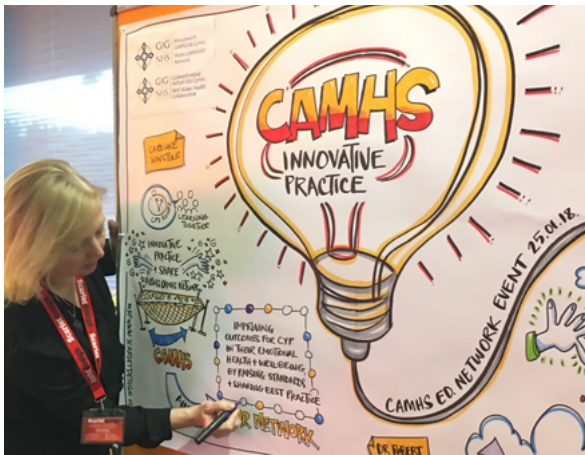
## Contents

- 2 AUDIT & INNOVATIVE / BEST PRACTICE EVENT IN CHILD AND ADOLESCENT MENTAL HEALTH SERVICES (CAMHS) AND EATING DISORDER SERVICES (EDS) JANUARY 26TH 2018
- 3 KEYNOTE WELCOME
- 3 PART 1: 'MENTAL HEALTH TRIAGE ..... FROM THE GROUND UP.'
- 4 PART 2: 'GENDER IDENTITY SERVICES FOR CHILDREN & YOUNG PEOPLE IN WALES'
- 4 PART 3: 'TRANS AWARENESS AND WORKING WITH YOUNG TRANS AND GENDER QUESTIONING PEOPLE'

**Presented by the All Wales CAMHS/ED network**

## Audit & Innovative / Best practice event in Child and Adolescent Mental Health Services (CAMHS) and Eating Disorder services (EDS) January 26th 2018

The All Wales Child and Adolescent Mental Health Services and Eating Disorder services (CAMHS/ED) network is hosted by the NHS Wales Health Collaborative. It held an annual audit and best or innovative practice event in Cardiff on 26th January 2018 to share best and innovative practice in CAMHS/ED services from across all health boards in Wales for Welsh residents and patients. ➔



## **Audit and Innovative / Best practice event in Child and Adolescent Mental Health services (CAMHS) and Eating Disorder services (EDS) January 26th 2018 (continued)**

The event also profiled the rapid development in CAMHS/ED services over the past few years with both new and strengthened services leading to improvements in care. It provided the opportunity for delegates to take away new ideas and new service models and apply them locally adding impetus to the development and implementation of sustainable CAMHS/ED services across Wales.

The event;

- **Provided an overview** of new CAMHS/ED services across Wales
- **Facilitated the sharing of information**, knowledge & best or innovative practice in Wales
- **Ensured reflection and discussion** on current service provision and

presented opportunities for improvement with links to Welsh Government policy

- **Provided networking opportunities** for just under 100 delegates from health boards and partners across Wales.

It was of particular interest to clinical leads, service managers, clinicians and their teams with a range of key disciplines attending such as nursing, psychology, family therapy, paediatrics, child psychotherapy, primary care, planning and strategic partners, children's services and many others working in or with a keen interest in CAMHS. Members of the public were also present to provide input and comment to the days programme and content.

Further information on the audit day or work of the all Wales CAMHS/ED network can be obtained from the network managers:

**Caroline Winstone**

[Caroline.Winstone@wales.nhs.uk](mailto:Caroline.Winstone@wales.nhs.uk)

or

**Glyn Jones:**

[Glyn.Jones@wales.nhs.uk](mailto:Glyn.Jones@wales.nhs.uk)

- **Full details and contents of each presentation** are available along with the named contact for each presentation / example of innovative practice.

**To access the full presentation for each presenter, click on the cover in each of part 1, part 2 and part 3. To email the presenters click on their photo or name.**





# Keynote Welcome



**Caroline Winstone** Transitional lead CAMHS/ED network manager introduced the event, welcomed all delegates to the event and provided detail on the content of the days programme.

**Dr David Williams** Ministerial adviser on CAMHS/ED services then provided an update on current progress of CAMHS/ED services in Wales and outlined the background to the key

elements in the programme:

- **Part 1** – Mental Health Triage
- **Part 2** – The Development of Gender Services linking to Welsh Government Policy in Wales
- **Part 3** – Information, presentation and training from 'Gendered Intelligence' a not for profit expert company who.

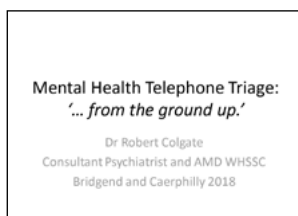
## PART 1

# 'Mental Health Triage ..... from the ground up.'

By Dr Robert Colgate - Associate Medical Director (mental health) WHSSC



Dr Robert Colgate presented this part of the programme.



Click on the cover above to access Robert's full presentation.

Triage systems are used at the point of entry to health services to provide a systemic way of classifying the urgency and service response requirements of clinical presentations. Although well established in emergency medicine, mental health triage systems have also been applied successfully in mental health settings (MHT) with

the initial process of assessment that occurs at point of entry to the health service. It is a clinical function in which a brief mental health screening assessment is undertaken to determine whether the person has a mental health related problem, the urgency of the problem, and the most appropriate service response.

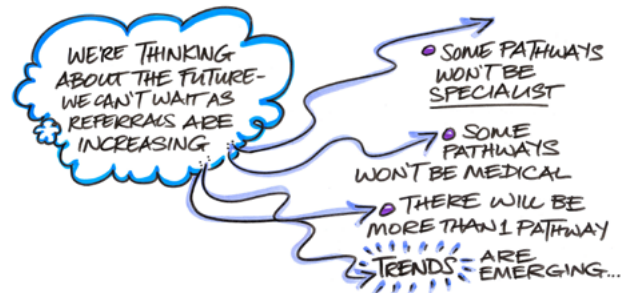




## PART 2

# 'Gender Identity Services for Children & Young People in Wales'

By Dr Mark Griffiths Consultant Child & Adolescent Psychiatrist at Aneurin Bevan Health Board



Click on the cover above to access Mark's full presentation.

Dr Mark Griffiths presented this part of the programme.

Gender dysphoria in children or gender identity disorder in children (GIDC) is a formal diagnosis used by psychologists and physicians to describe children who experience significant discontent with their biological sex, assigned gender or both.

Mark detailed how the service is commissioned here in Wales. Currently it is commissioned by Welsh Health Specialised Services Committee (WHSSC) on behalf of the seven Health Boards in Wales. The specialist service is commissioned from one

NHS England provider, The Tavistock & Portman NHS Foundation Trust based in London which is a specialist service and they have an outreach clinic in Llandough, Cardiff for Welsh patients. There is a Gender Identity Development Services (GIDS) website [gids.nhs.net](https://gids.nhs.net) for further information and serves as an excellent resource. Mark discussed current waiting times in Wales to the specialist service which is approximately 1 year. He outlined the referral pathway for funding which is thorough local CAMHS services.

## PART 3

# 'Trans Awareness and Working with Young Trans and Gender Questioning People'

By 'Gendered Intelligence'  
Presenters Lee Gale & Jason Barker



Lee and Jason presented this part of the programme. Lee Gale and Jason Barker are trainers working for GI. GI aims to increase individuals and groups of people on their understanding of gender diversity and improve trans people's quality of life.

GI consists of a team of skilled trainers, facilitators, youth workers and qualified teachers. Some of the team hold doctorates in the area of transgender studies and / or have a lived experience of being trans. GI has a working and in depth knowledge of the wider trans community and of the young

trans community in particular. GI provides a non-judgemental service that supports all educational settings to develop and improve their trans inclusion and gender diversity good practices. GI's vision is of a world where people are no







### PART 3

## 'Trans Awareness and Working with Young Trans and Gender Questioning People' (continued)

longer constrained by narrow perceptions and expectations of gender, and where diverse gender expressions are visible and valued. GI aims are to increase understandings of gender diversity and improve trans people's quality of life. GI also work closely with the Gender Identity Development Service (GIDS), the only one of its kind in the UK and is a national specialised service based at the Tavistock and Portman in London and in Leeds providing for young people, and their families, who experience difficulties in the development of their gender identity.



Please click on the covers above to open each resource.

